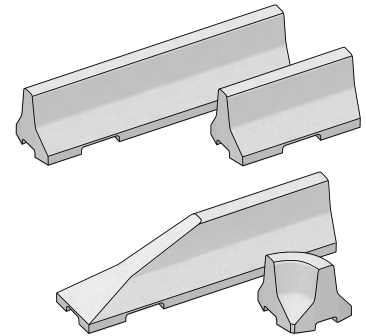


# TECHNICAL LIST (HS01)

## ROAD BARRIER 50

### Technical Product Data:

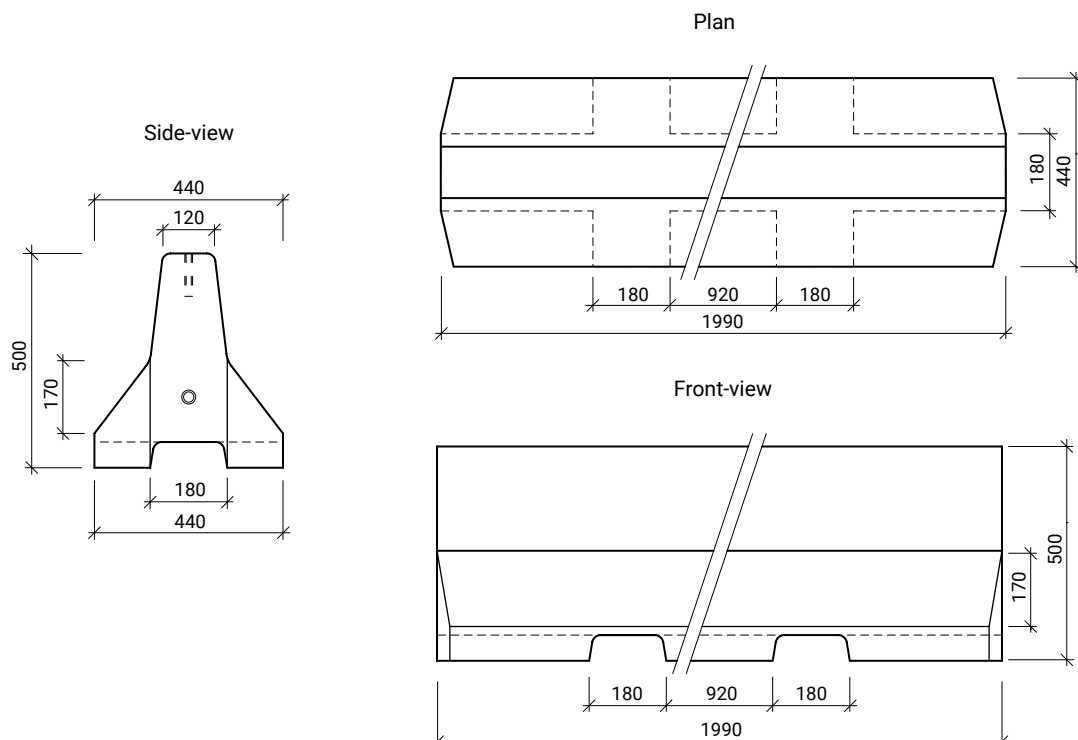
Our road barriers are designed for separating traffic lanes, securely dividing roads from pavements and securing traffic islands and roundabouts. Individual segments may be securely fixed to each other. Handrails can also be installed. Accessories such as end pieces and curved segments are available. The bottom contains openings to prevent water from accumulating in front of the barriers.



Technical Product Data	Nominal dimensions mm			Weight
	Height	Length	Width	kg/pcs
basic segments	500	2000	440	525
short segments	500	1000	440	260
end segments	500	2000	440	443
90° corner, outside	500	490	440	145
R 0.5 curve - 90°	500	790	440	119
R 1.0 curve - 90°	500	1575	440	330
Handrail for Jersey barrier	500	2000	-	7,2
Handrail for Jersey barrier	500	1000	-	11,4

### Nominal dimensions - basic shapes:

#### Basic segment

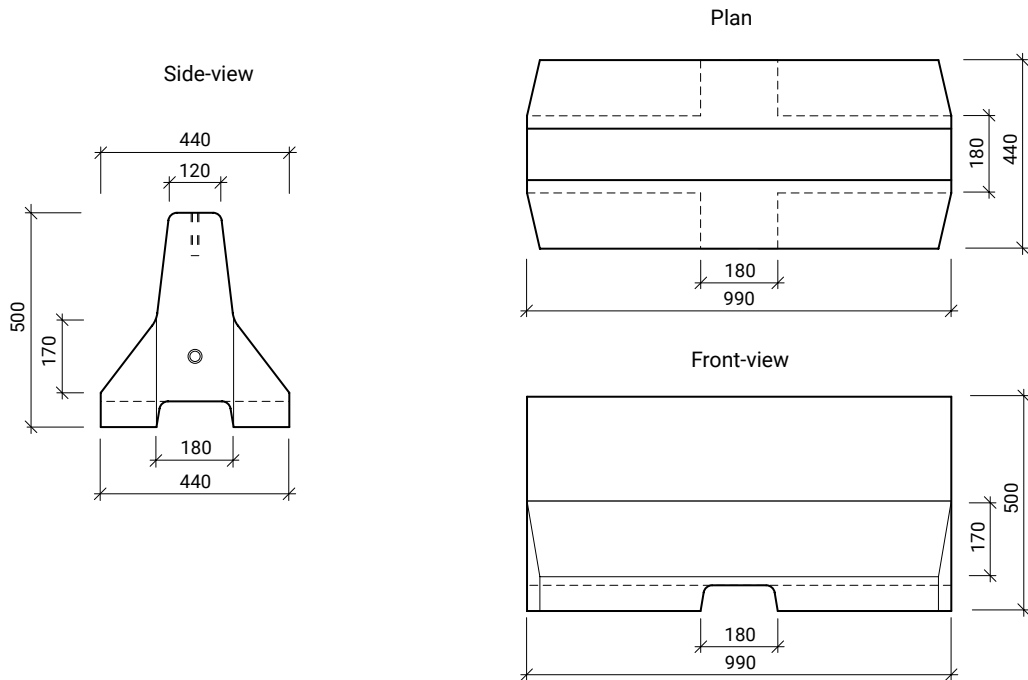


# TECHNICAL LIST (HS01)

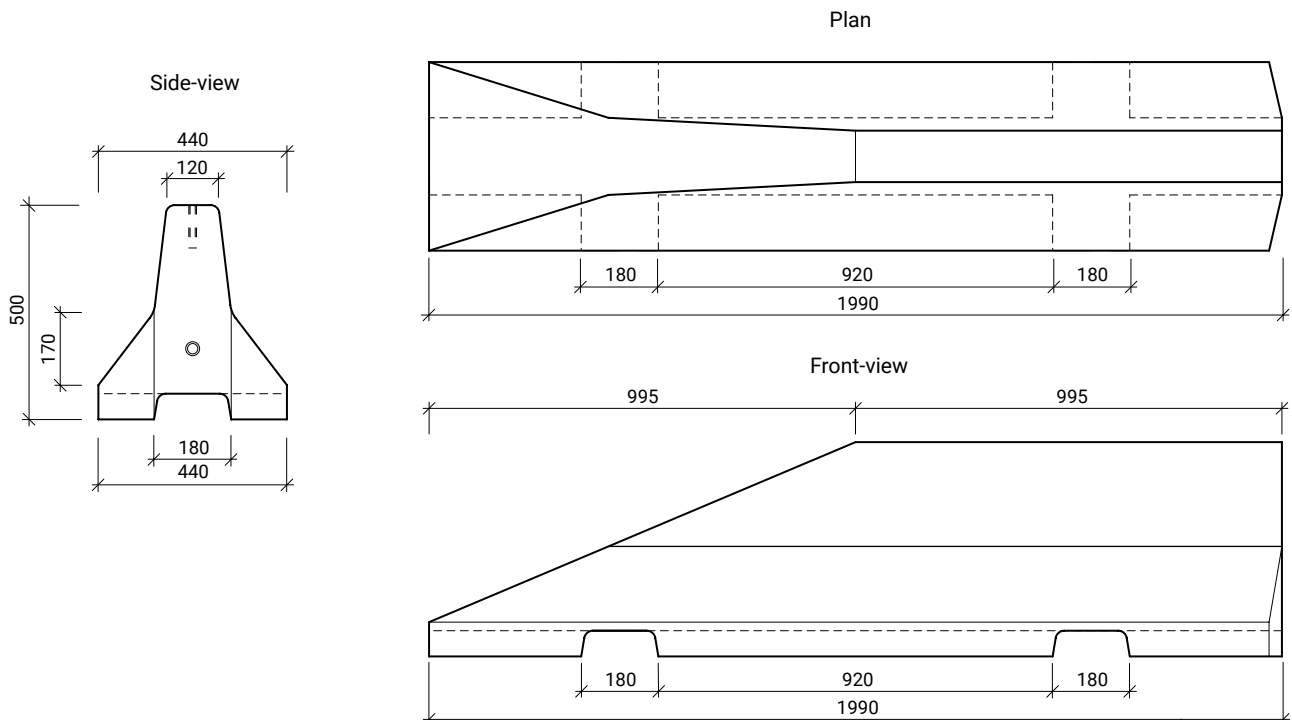
## ROAD BARRIER 50

Nominal dimensions - basic shapes:

### Short segments



### End segments

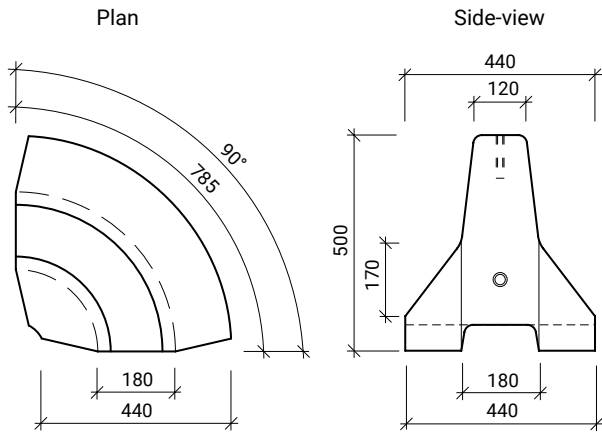


# TECHNICAL LIST (HS01)

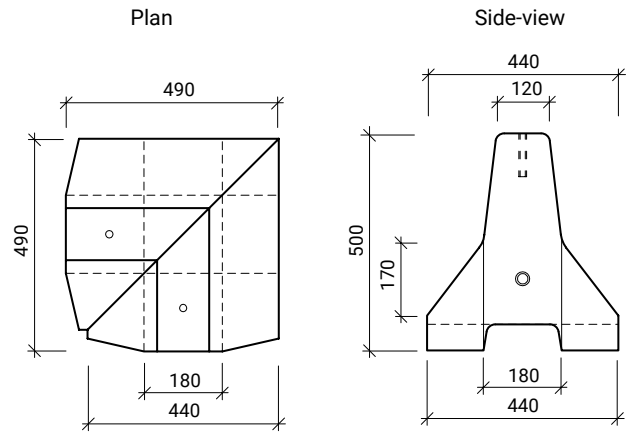
## ROAD BARRIER 50

Nominal dimensions - basic shapes:

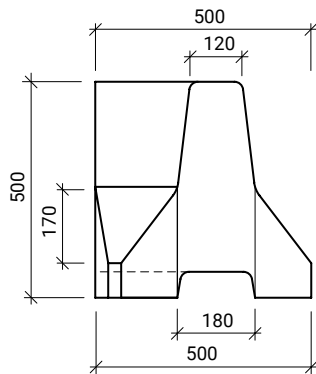
R 0.5 curve - 90°



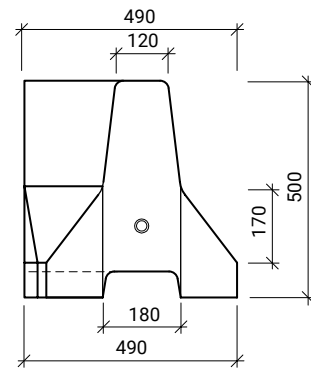
90° corner, outside



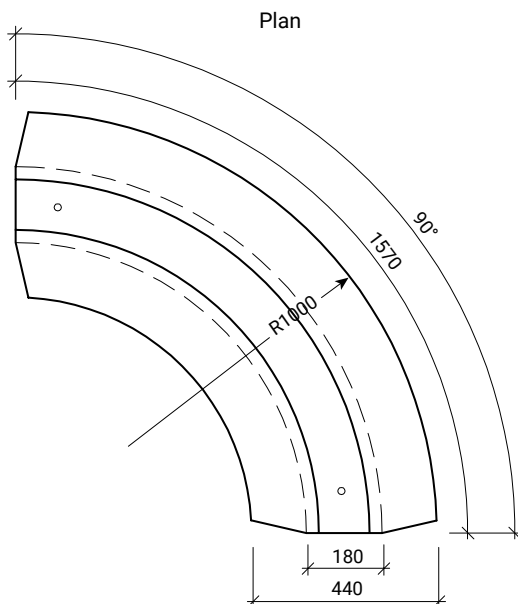
Front-view



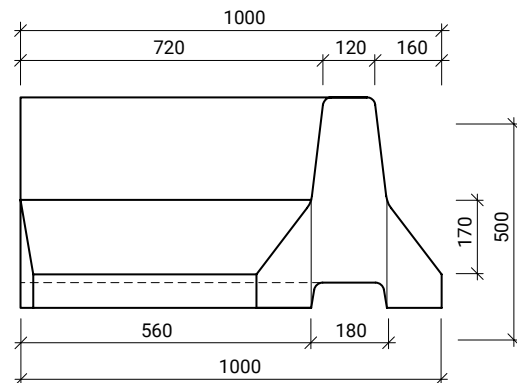
Front-view



R 1.0 curve - 90°



Side-view



# TECHNICAL LIST (HS01)

## ROAD BARRIER 50

### PROPERTIES AND CHARACTERISTICS

**ROAD BARRIERS 50** - Jersey barriers are made of high-strength aerated cement (C45/55 class) and can withstand XF4, XD3 aggressive environments as per ČSN EN 206. The use of high-strength concrete ensures:

- High compression and transversal tension strength
- Resistance to water and defrosting agents
- Minimum water absorption
- High-quality surfaces

Our manufacturing technology enables us to produce Jersey barriers with smooth surface, superior strength and extreme resistance to water and chemical defrosting agents. The standard surface treatment is natural concrete grey.

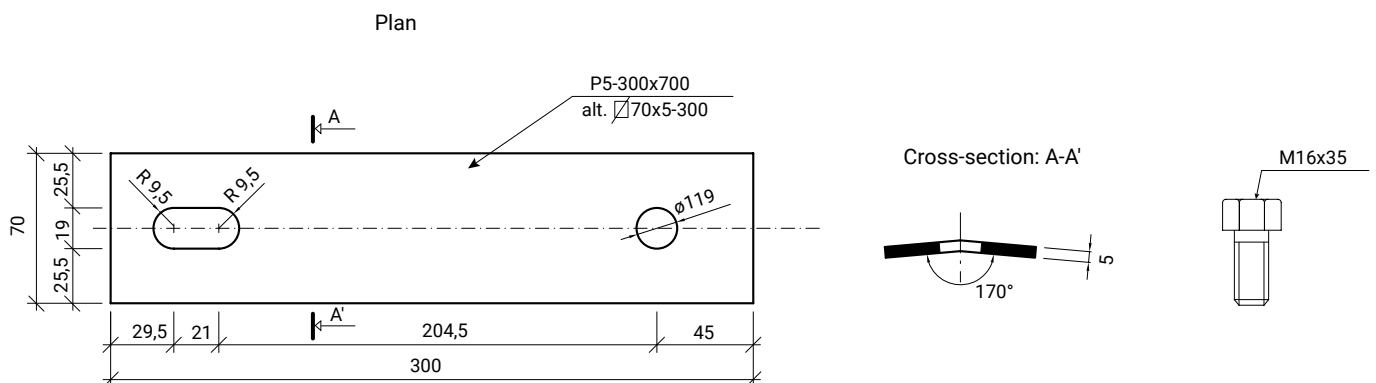
**ROAD BARRIERS 50** - Jersey barriers consist of individual steel-reinforced concrete blocks with an inverted Y cross section (similar to the original Jersey barriers), which provides protection and division of different types of road users (pedestrian, cyclists, car drivers). It is designed to separate roads from pedestrian areas or cycling paths, to separate traffic lanes, create protected islands and roundabouts, slow traffic in residential and pedestrian zones and outline diversions and closures in city traffic. The Jersey barriers are not compliant with ČSN EN 1317-5. The individual segments are laid onto surfaced areas. After they are joined by steel joints, the barrier becomes in effect a link chain, which provides the required deformation zone. Curved segments may be used to create roundabouts and other similar structures. The height of all components is 50 cms.

CS-BETON produces the following basic Jersey barrier components:

- ROAD BARRIER 50 basic segments - straight segment - 2 m long
- ROAD BARRIER 50 short segments - straight segment - 1 m long
- ROAD BARRIER 50 end segments - end segment (sloping) - 2 m long
- ROAD BARRIER 50 curve - radius 0,5 m
- ROAD BARRIER 50 curve - radius 1,0 m - 90°
- ROAD BARRIER 50 corner 90° outside corner

The top surface of each segment contains two anchors with Rd 16 inside threads to enable handling of the segments. These are used to attach lifting eyes for the lifting device's hooks. This type of handling is quick and easy and enables installation of the Jersey barriers directly from a transport vehicle with a lifting arm. Each line starts with an end/sloped segment, continues with the necessary number of basic segments and ends in another sloped segment. Each segment contains a number of longitudinal and transversal channels, which prevent surface water from being trapped behind the line. The transversal channels may be used for transporting the segments on a forklift truck. Suitable steel handrails can be fitted to the barriers after they are completed. The system is intended for use in city traffic and roads with limited speeds of up to 50 kms per hour.

#### Joint - shop drawing:



# TECHNICAL LIST (HS01)

## ROAD BARRIER 50

Nominal dimensions - basic shapes:

